

# Aggressive drilling program to start at Namibian uranium project

Three strategies aimed at converting existing resources and  
extending area of known mineralisation

International uranium company West Australian Metals Limited (ASX: WME) is pleased to report that it is set to embark on an extensive drilling campaign at its 80%-owned **Marenica Uranium Project** in Namibia, Southern Africa.

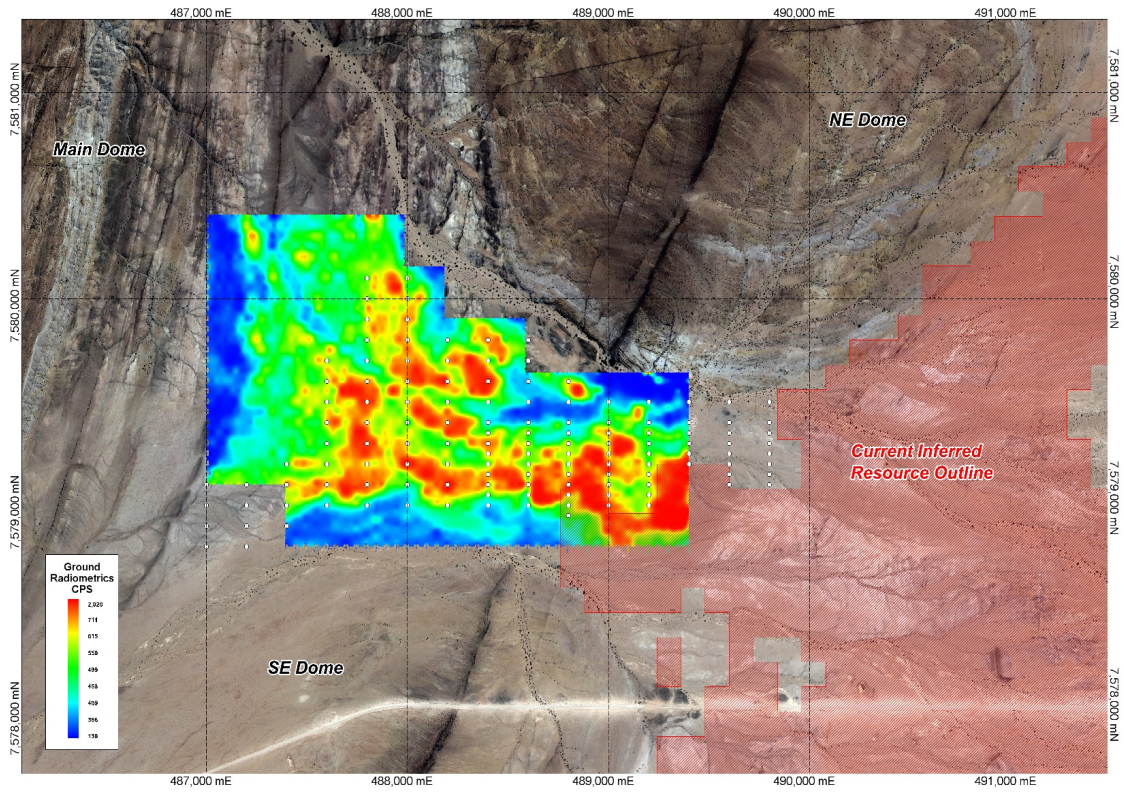
The Company has taken an aggressive approach to the evaluation of the Marenica Project by setting aside up to A\$5M budget to be spent over the next six months.

An initial 5000-metre RC program is designed to infill areas of wide-spaced drilling completed in 2008. This will bring down the spacing from 320m by 160m to no less than 120m by 80m. Representatives from SRK Consulting are on site from the 17<sup>th</sup> July to supervise QA/QC procedures relating to the initial 5000 metres of reverse circulation (RC) drilling

The new campaign will also include a 100-hole exploration program to the west of the known resource. Ground radiometrics and mapping have recently been completed in this area, which will be tested for additional secondary uranium resources. The radiometric image below is superimposed on the recently purchased Quickbird satellite imagery. The radiometric anomaly is orientated east-west along the southern margin of the Marenica dome, see figure 1.

A further 5000m is allocated to exploration for primary mineralisation within and north of the Marenica dome following on from successful results achieved in exploration diamond drilling. The Company is in the process of obtaining drill clearances, with drilling planned to start in August.

Ground radiometric surveys and mapping is underway over the Phillipus and Springbok targets, to date approximately 100 line kilometres of data has been collected. A total of 50 rock-chip samples were collected from radiometrically anomalous areas in the northern part of the tenement area (see figure 2). The Phillipus and Springbok prospects are identified as high-tenor airborne radiometric anomalies, with field reconnaissance identifying primary uranium mineralisation associated with altered alaskitic granites and pegmatites.



**Figure 1. Ground Radiometrics and Proposed RC program**



**Figure 2 . Portable Core rig being used to collect rock samples**

The third stage of the new program will see Terratec Geophysical Services undertake down-hole probing of approximately 750 historic holes. On completion of the re-probing and infill RC program, a recalculation of the resource will be completed by SRK Consulting, aimed at converting a large part of the known resource to the “indicated” category.

The current inferred resource at Marenica stands at 111Mt at 140ppm  $U_3O_8$  (17,000 tonnes or 34Mlb of contained  $U_3O_8$ ).

The Marenica Project is located 70km north of Rio Tinto’s Rossing Uranium Mine in one of the most significant emerging uranium provinces in the world.

The new drilling program and associated studies are designed to define a processing route that will enable the Company to start a scoping study later this year.

The Company is also pleased to report that a General Meeting of shareholders of the Company held at 10am on July 9<sup>th</sup>, shareholders approved the placement of shares to raise approximately \$9.9 million. This ensures that the Company is well funded to continue with the planned exploration and development program at Marenica.

In light of the increased budget and its future commitments, the Company has leased an office in Swakomund in the CBD on Daniel Tjangerero Str 35. All geological staff will now be



based and living in Namibia.

Figure 3. Swakomund office

## Notes

*Where eU3O8 is reported it relates to values attained from radiometrically logged boreholes. The probe has been calibrated at the Pelindaba Calibration facility in South Africa. Down hole spectral gamma logging/probing of drill holes provides a powerful tool for uranium companies to explore for, and evaluate, uranium deposits. Such a method measures the natural gamma rays emitted from material surrounding a drill hole out to around 0.5 metre from its centre - the gamma probe is therefore capable of sampling a much larger volume than that which would normally be recovered from a core or RC hole. These measurements are used to estimate uranium concentrations with the commonly and accepted initial assumption being that the uranium is in (secular) equilibrium with its daughter products (or radio-nuclides) which are the principal gamma emitters. If uranium is not in equilibrium (viz. in disequilibrium) – as a result of the redistribution (depletion or enhancement) of uranium and/or its daughter products - then the true uranium concentration in the holes logged using the gamma probe will be higher or lower than those reported in the announcement.*

*Information in this report that relates to exploration results and laboratory testwork currently being collected at Cardiff University, Wales and reflects information compiled by Eur.Geol. Robert Bowell PhD, C.Chem., C.Geol., Principal Geochemist of SRK Consulting (UK) Limited who has sufficient experience relevant to the style of mineralisation and type of deposit under consideration and to the activity which he is reporting on as a Competent Person as defined in the 2004 Edition of “The Australian Code for Reporting Exploration Results, Mineral Resources and Ore Reserves.” Dr Bowell consents to the inclusion in this report of the matters based on the information compiled by him, in the form and context in which it appears.*

*Information in this announcement that relates to Mineral Resources reflects information compiled by Jonathon Abbott and Arnold van der Heyden of Hellman and Schofield. Mr. Abbott has more than five years experience in the field of Exploration Results and is a competent person in terms of JORC standards for Exploration Results and of resource estimation in general. Mr. van der Heyden has sufficient experience which is relevant to the style of mineralisation and type of deposit under consideration and to the activity which he is reporting on as a Competent Person as defined in the 2004 Edition of “The Australian Code for Reporting Exploration Results, Mineral Resources and Ore Reserves.” Mr. Abbott and Mr. van der Heyden consent to the inclusion in this announcement of the matters based on the information compiled by them, in the form and context in which it appears.*

